



World Food
Programme

SAVING
LIVES
CHANGING
LIVES

View from Humanitarian Food Assistance Systems

WFP

African Regional Bureaux – RBC, RBD, RBJ, RBN

ABOUT WFP

WFP is the world's largest humanitarian organization saving lives in emergencies and using food assistance to build a pathway to peace, stability and prosperity, for people recovering from conflict, disasters and the impact of climate change.

WFP delivers food, cash and other assistance in emergencies.

At the same time, we focus on sustainable development, promoting long-term change by working in partnership with national governments and communities.

WFP is funded entirely by donations from governments, companies and private individuals.

WFP 2022 IN NUMBERS

US\$ 6 BILLION
worth of food, goods
and services procured

5 MILLION MT
of food delivered



**120 COUNTRIES &
TERRITORIES**
assisted by WFP

160 MILLION PEOPLE
reached by WFP

1,200 PARTNERS
supported by WFP

WFP Food Safety and Quality (FSQ)



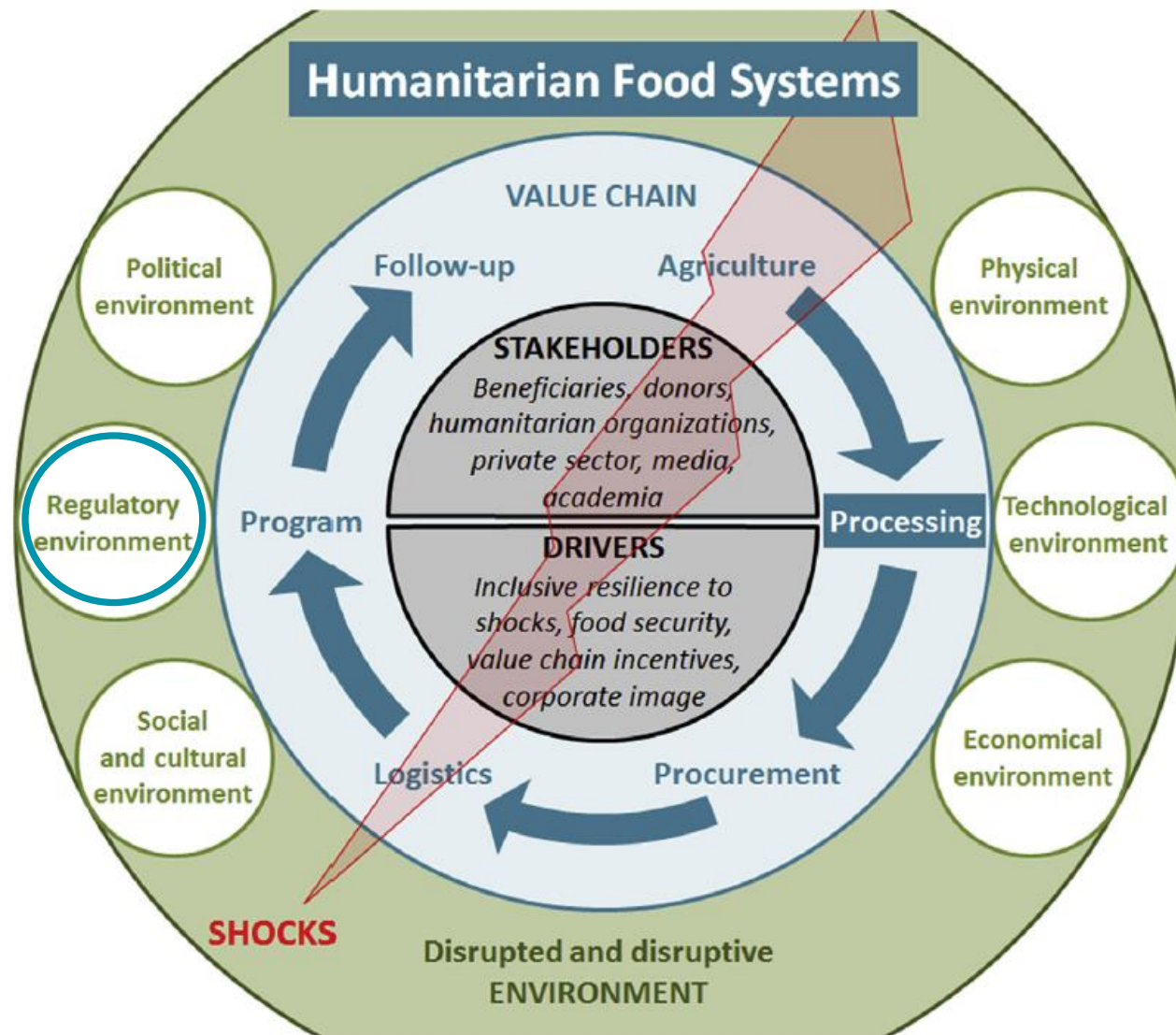
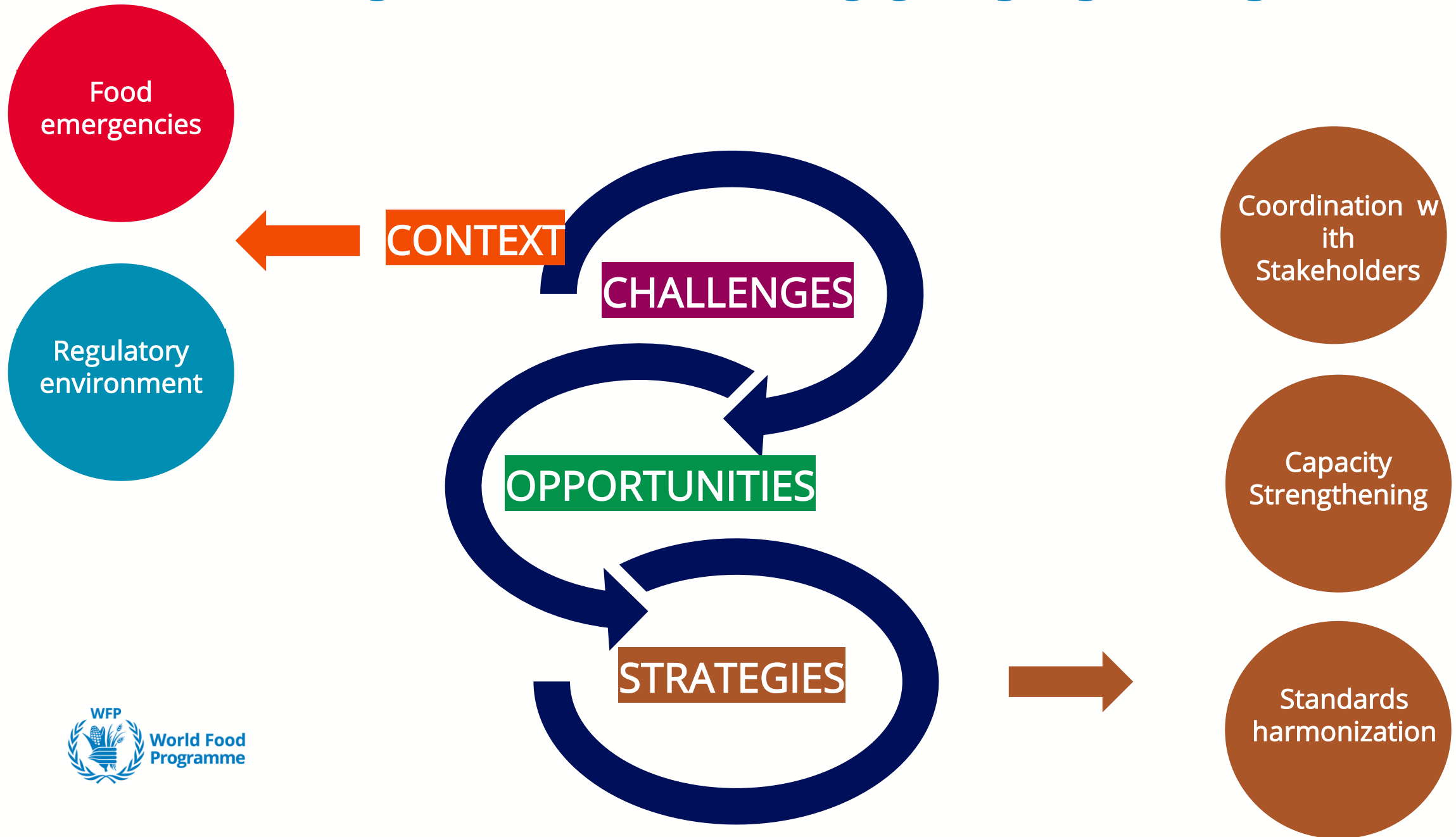


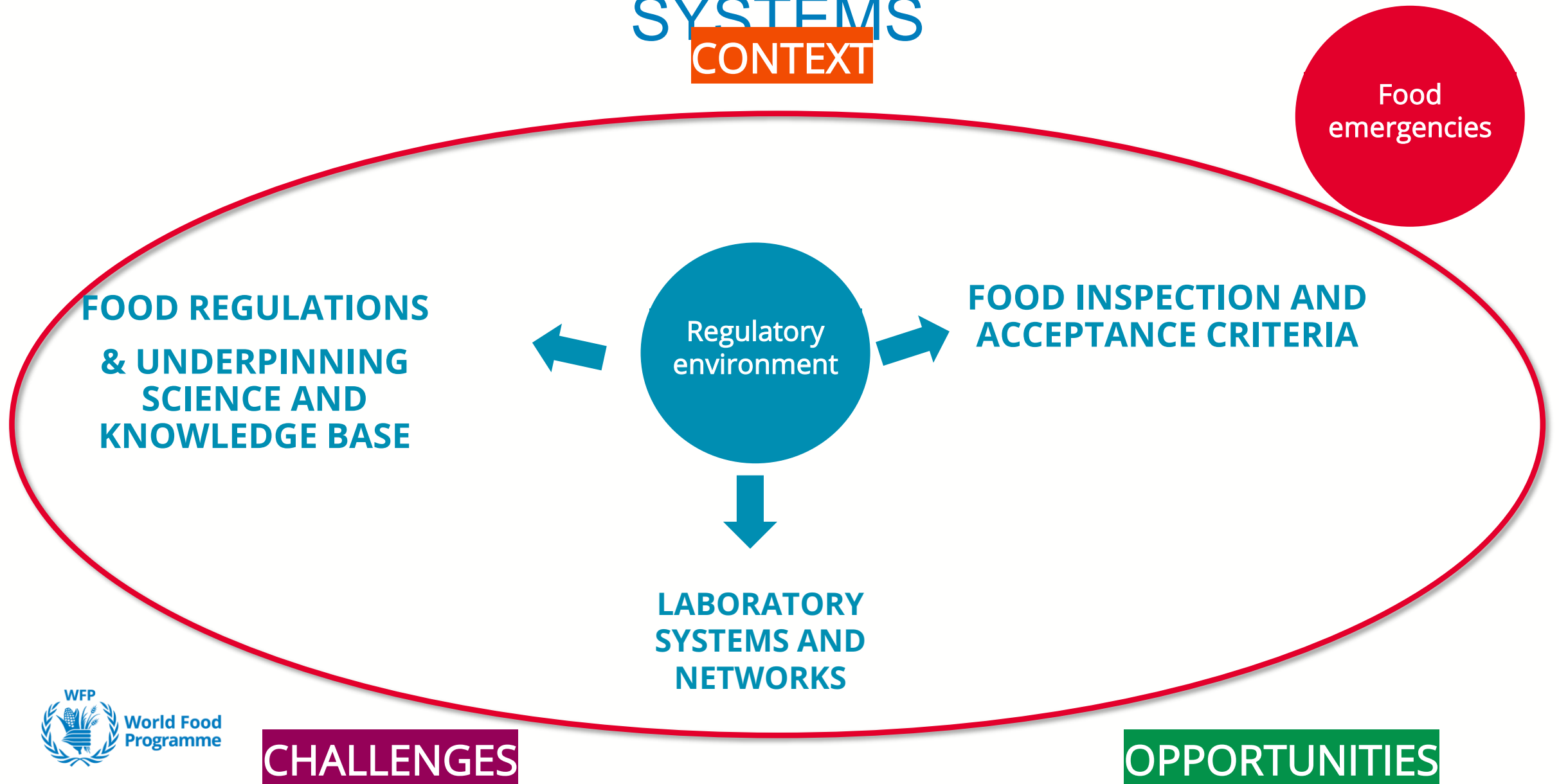
Fig. 2. Conceptual framework for Humanitarian Food Systems.

HUMANITARIAN FOOD SYSTEMS



REGULATORY ENVIRONMENT AND humanitarian FOOD SYSTEMS

CONTEXT



REGULATORY ENVIRONMENT AND humanitarian FOOD SYSTEMS

CHALLENGES

Harmonization of food standards

Managing issues which can lead to operational delay, costs and food losses

Creating/identifying opportunities for local sourcing (Ex. SNF)

Standards enforcement

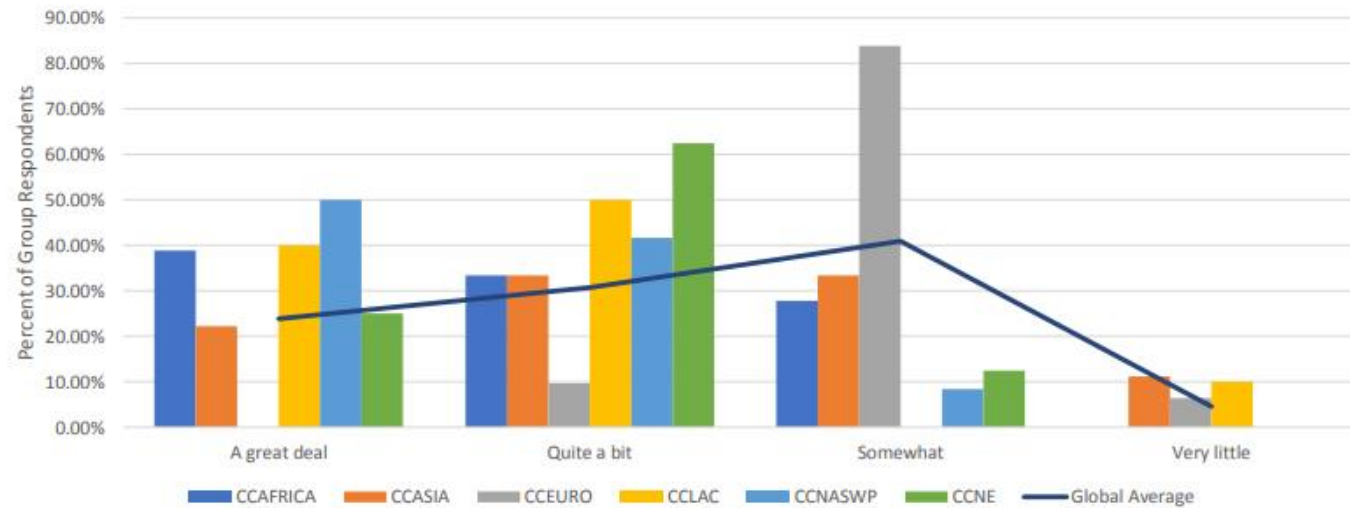
Ensuring products comply with diverse & evolving food safety and quality standards

FOOD REGULATIONS

CONTEXT

Diverse national standards

Extent that Codex Texts used as a Baseline to Inform Food Legislation, Policies, Regulations, Programs and/or Practices



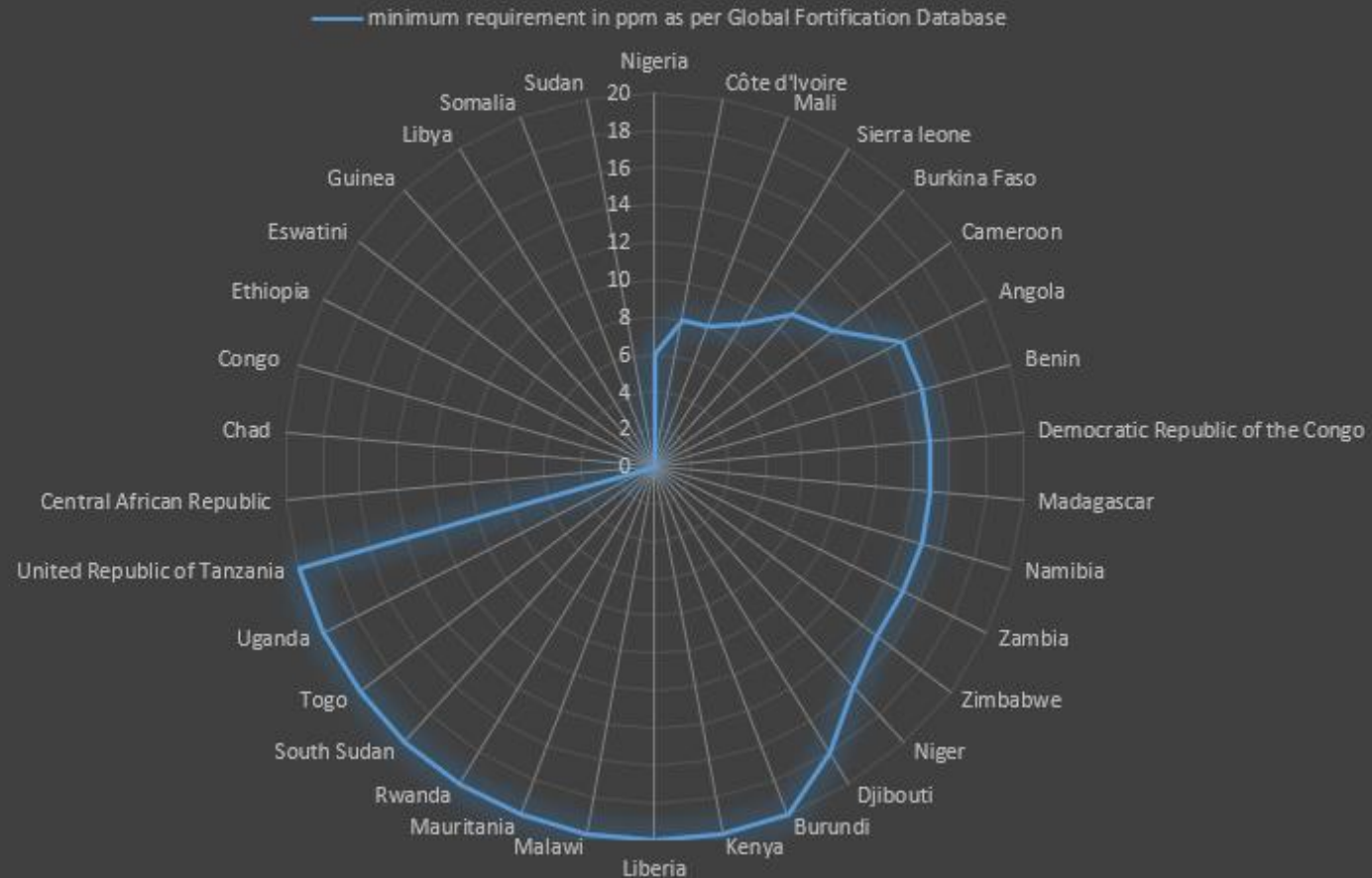
* Survey Question

FOOD REGULATIONS

CONTEXT

Various national fortification standards

Analysis of Vitamin A mandatory fortification for oils in 34 countries in Africa (August, 2021)



FOOD INSPECTION AND ACCEPTANCE CRITERIA

CONTEXT

Specific clearance processes for different countries

Application of relevant standards

Interpretation of regulatory standards

Presentation of results and methods

Availability of accredited local IC companies

Access to rejected products for re-inspection

Voluntary vs Mandatory Food Standards

LABORATORY SYSTEMS AND NETWORKS

CONTEXT

Coverage of FSQ parameters included in WFP specifications by local labs

Inclusion of food safety parameters

Analytical methods

Local accreditation bodies

Monitoring systems

REGULATORY ENVIRONMENT AND humanitarian FOOD SYSTEMS

OPPORTUNITIES COLLABORATION

- Support harmonized humanitarian standards, based on Codex and interagency standards, to facilitate supply of sufficient, safe and nutritious foods to people in needs.
- Increased data sharing on African countries' foods control trends to inform international standard setting
- Increased understanding and use of national FSQ standards
- Wider engagement with stakeholders - humanitarian agencies within the standard setting process
- Local capacity strengthening on implementing food standards and analytical testing methods
- Further guidance for local producers and processors to build their capacity to comply with local



Opportunities: SAFER

A multi-sectoral collaboration

Using humanitarian food standards to turn the tide against hunger



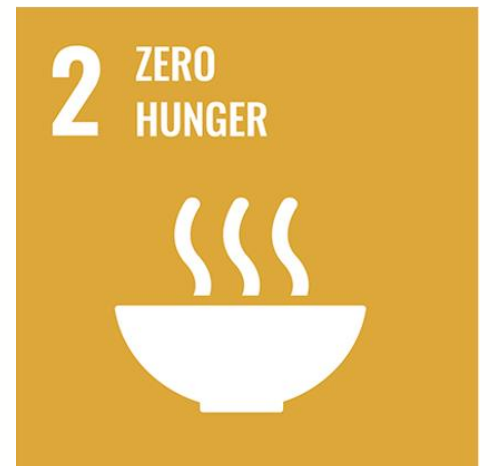
World Food
Programme

SAVING
LIVES
CHANGING
LIVES



What

- S: standards *harmonized & science-based*
- A : accounting for food security, nutrition and sustainability
- F: for
- E: effective
- R: humanitarian relief



WHO



FAO



UNICEF



MARS



Kansas State University



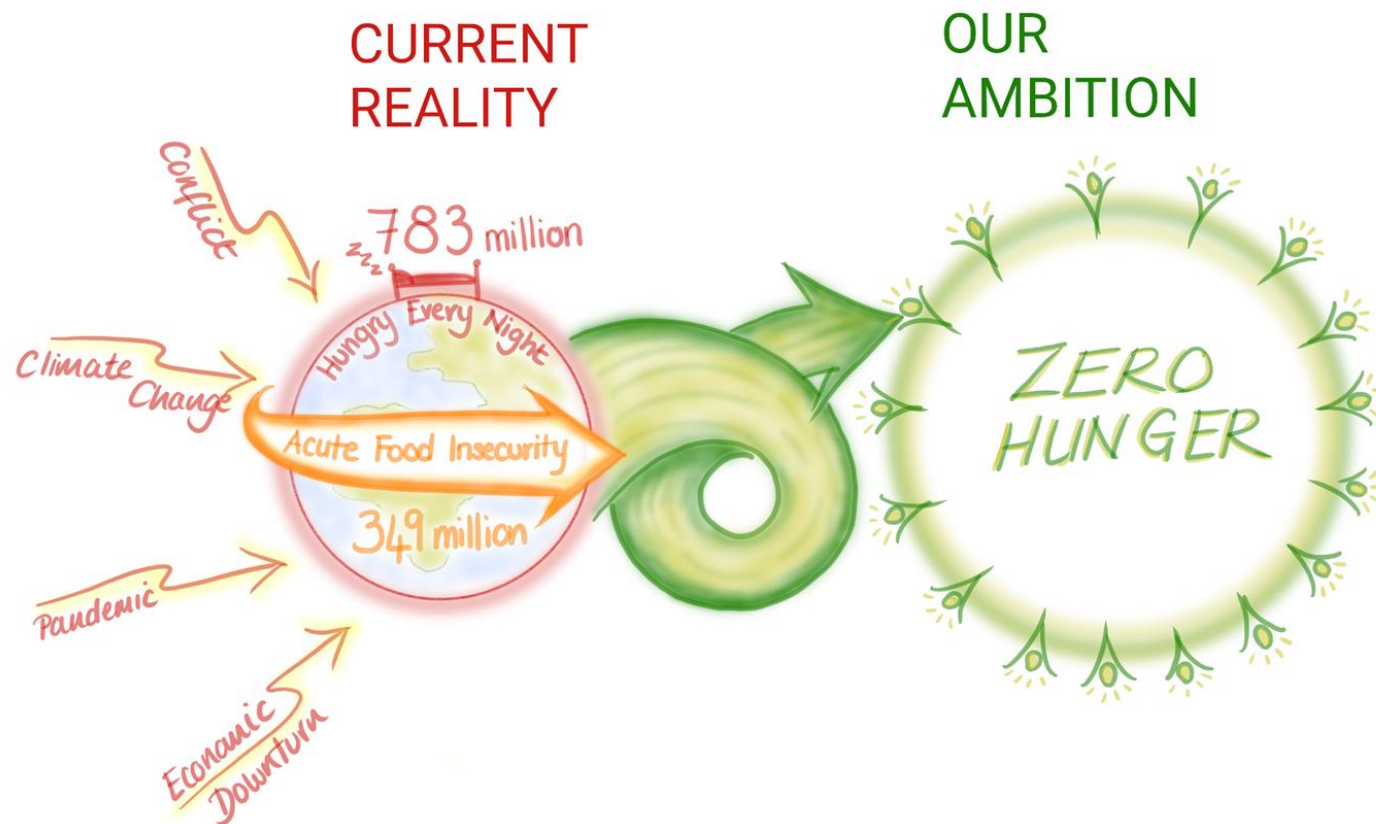
Abbott



World Food Programme

Meeting Magic

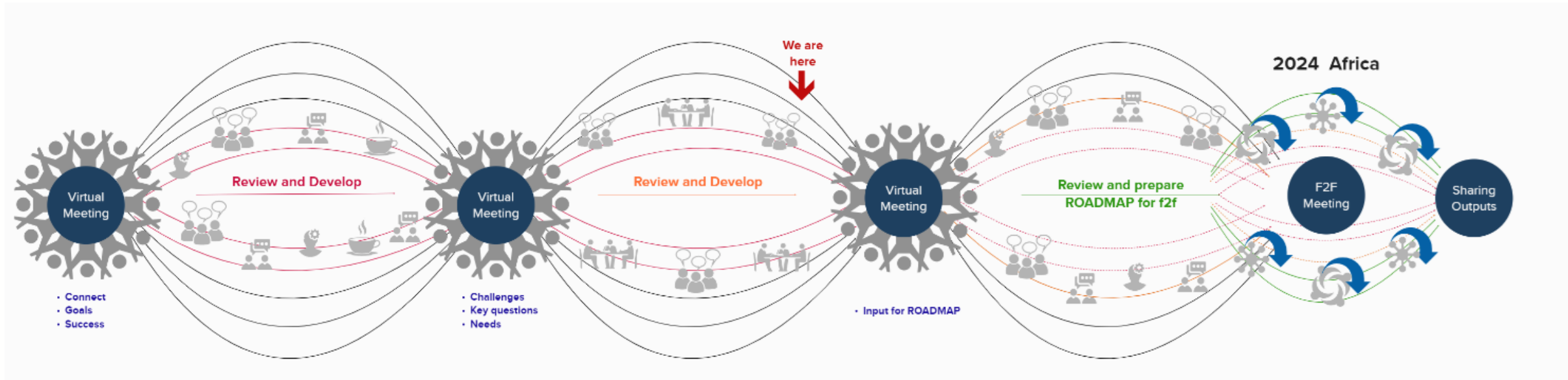
Why now



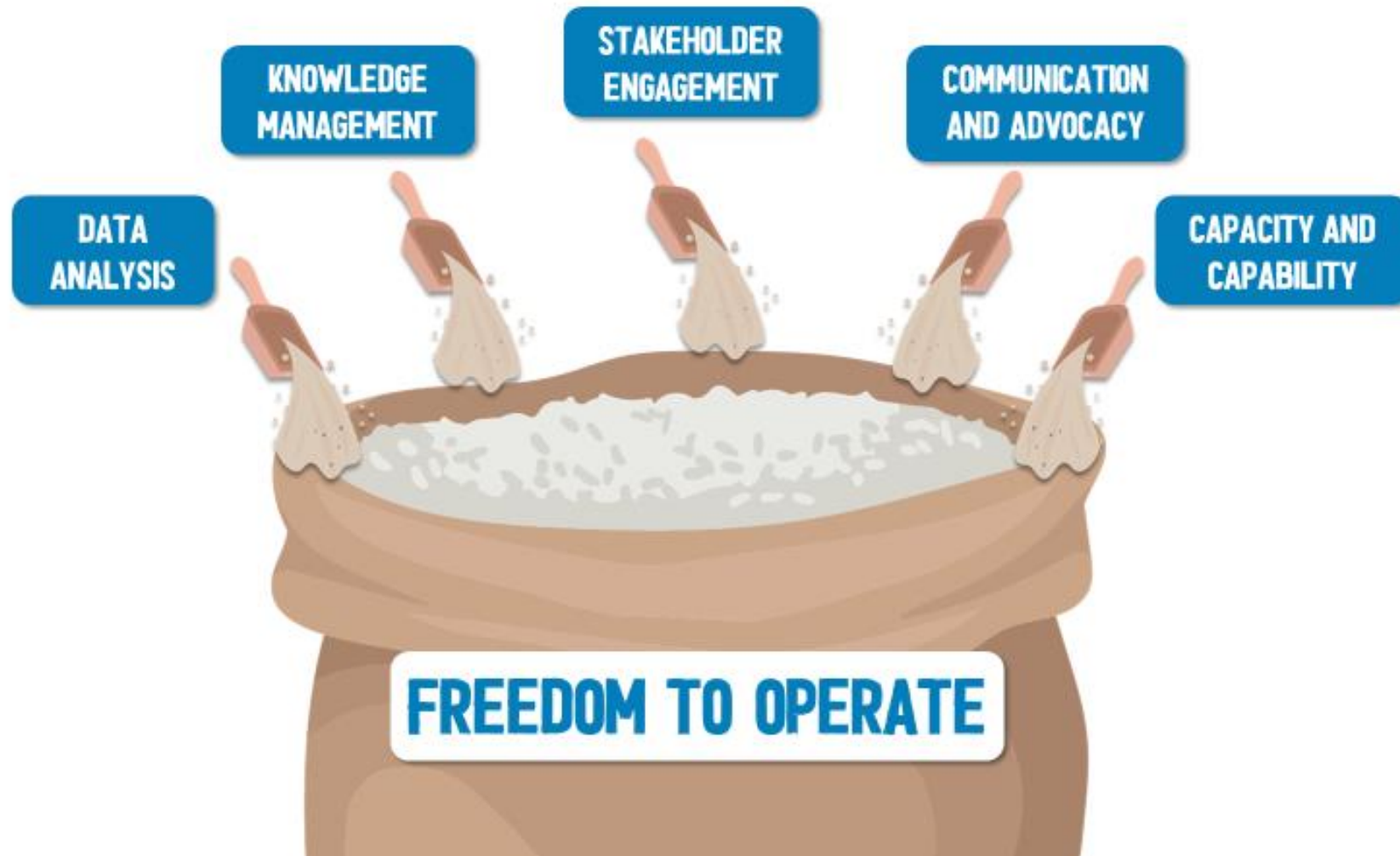
How



A multi-sectoral & multi-principle collaborative approach



Results so far



An aerial photograph showing three women walking along a dirt path in a rural, green landscape. The woman in the foreground on the right is carrying a large woven basket filled with cardboard boxes. The woman in the foreground on the left is also carrying boxes. A third woman is visible further back on the path, also carrying a box. The path is uneven and surrounded by dense vegetation.

Roadmap towards SAFER

Contact:

hq.foodspecification@wfp.org